
AN1078 Demonstration ReadMe for the Low Voltage Motor Control Development Bundle with the dsPIC33EV256GM106 Internal Op Amp PIM (MPLAB X)

1.1 INTRODUCTION

This document describes the setup requirements for running the Sensorless FOC algorithm with a Slide Mode Controller, which is referenced in AN1078 *"Sensorless Field Oriented Control of PMSM Motors using dsPIC DSC"* using a Low Voltage Motor Control Development Bundle.

1.2 SUGGESTED DEMONSTRATION REQUIREMENTS

MPLAB and XC16 versions used:

- MPLABX version 2.10 (or later)
- XC16 version 1.21B (or later)

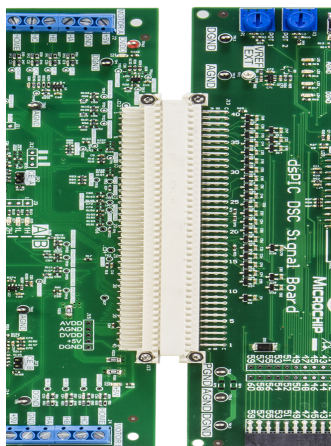
Hardware used with part numbers, available from www.microchipdirect.com:

- Low Voltage Motor Control Development Bundle (DV330100)
- dsPIC33EV256GM106 Internal Op amp PIM (MA330036)
- 24V Power supply (AC002013)
- 24V Hurst motor (AC300020)

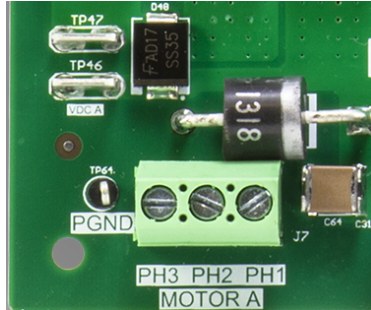
1.3 HARDWARE SETUP

The following hardware setup allows the Sensorless FOC algorithm to run on the Low Voltage Motor Control Development Bundle using Op amps that are internal to the dsPIC33EV256GM106 device.

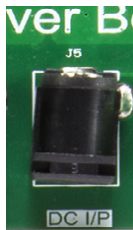
1. Place the Motor control 10-24V driver board (Dual/Single) and the dsPIC DSC signal board on a sturdy insulated platform.
2. Connect dsPIC DSC Signal Board and Motor Control 10-24V Driver Board (Dual/Shunt) using connector J13



3. Make sure that the dsPIC33EV256GM106 Plug in Module is mounted in the U2 socket of dsPIC DSC signal board
4. Ensure Jumper J15 on dsPIC DSC Signal Board is populated.
5. Connect Motor A (three-phase, 10 pole, 24V Hurst motor AC300020) wires to J7 on Motor Control 10-24V Driver Board. As this is a sensorless algorithm, the motor phase wires (Red, Black, and White) can be connected to PH1, PH2, and PH3 in any order. The Green wire does not have internal connection in the motor, so it can be left unconnected.

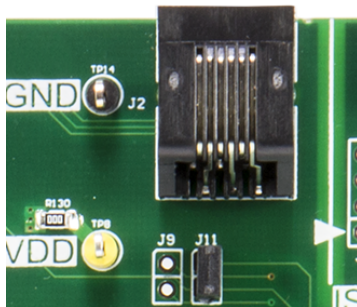


6. Connect the 24V power supply to the Motor Control 10-24 V Driver Board (Dual/Single) connector J5.



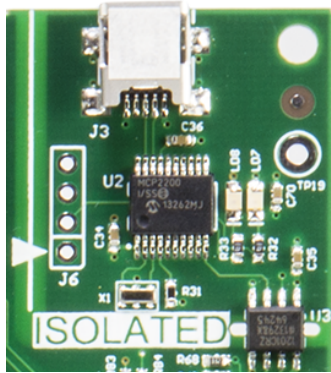
Note: Power Supply connected to Motor Control 10-24 V Driver Board(Dual/Single) can supply power to both boards. So power supply connection to dsPIC DSC Signal Board is optional

7. Connect the programmer/debugger to the J2 connector on dsPIC DSC Signal Board.



8. For enhanced demonstration, the application requires the Real-Time Data Monitor (RTDM) along with DMCI (Data Monitor Control Interface) Plug-in available in MPLABX IDE.
 - Users can connect a mini-USB cable from their computer to the J3 connector on the dsPIC DSC Signal Board.
 - Ensure Jumper J11 on dsPIC DSC Signal Board is populated, to establish this communication link

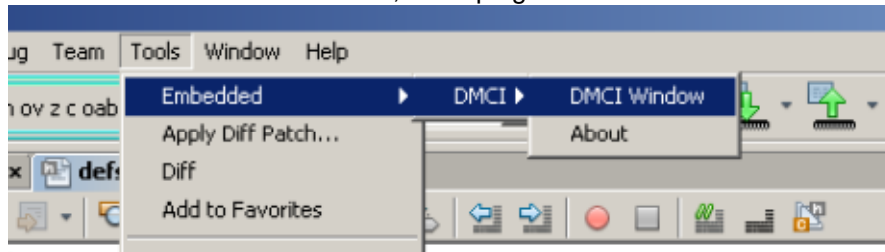
Demonstration ReadMe



Notice that when the development board is powered and connected to the USB host for the first time, the driver needs to be installed on the host for proper operation. When the USB driver is installed, a new COM port should show up in Windows device hardware manager. This should be the COM port used for Enhanced Demonstration.

USB driver can be found at <http://www.microchip.com/MCP2200>

- Also ensure DMCI plug-in available in MPLABX IDE is installed for debugging applications in real-time. Steps to install the plugin can be found in MPLABX IDE Help
MPLABX IDE->Additional Tasks -> Add Plug-In Tools-> Add Plug-Ins
- After successful installation,DMCI plug-in is available under Tools->Embedded->DMCI



- In MPLAB X IDE, you will need to do the following:
 - This is applicable for MPLAB X IDE version 2.10 or later. Check the checkbox "Load symbols when programming or building for production (slows process)" under the "Loading" category in the Project Properties dialog (right click on the project name and select "Properties"). This will load debug symbols for building and programming.
 - Uncheck the checkbox "Maintain active connection to hardware tool" under Tools>Options, Embedded button, Generic Settings tab.
- For additional information on DMCI ,refer to MPLABX IDE Plug-in-Tools help for 'Data Monitor and Control Interface'

1.4 SOFTWARE SETUP AND RUN

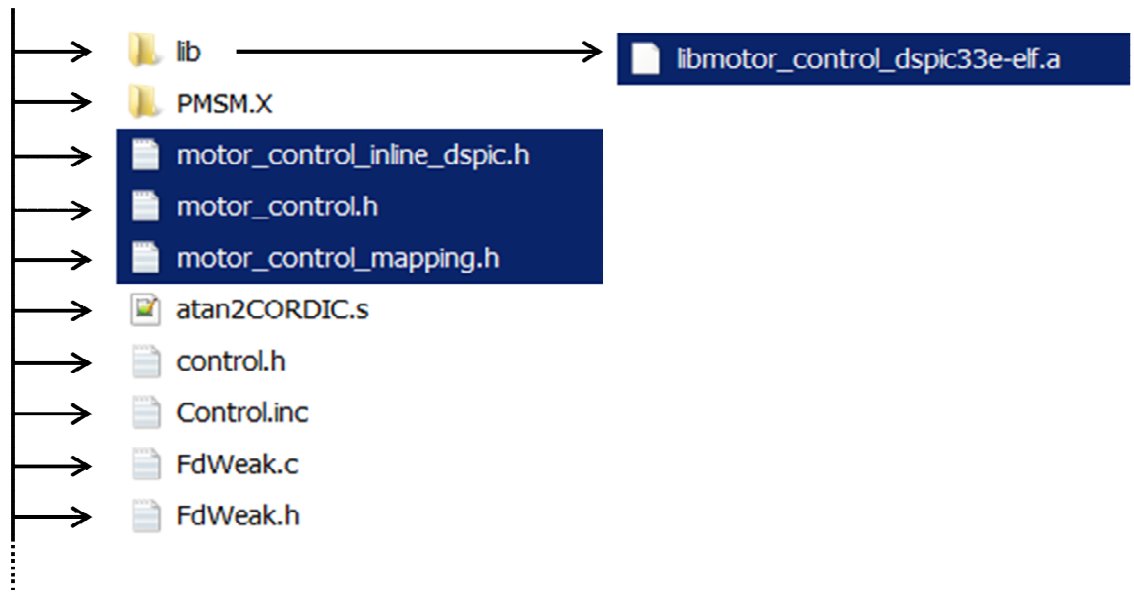
1.4.1 Basic Demonstration

This demonstration consists of running the motor using a push button and varying the speed with a potentiometer. The software, which is available for download from the Microchip website, is already configured for enabling the basic demonstration.

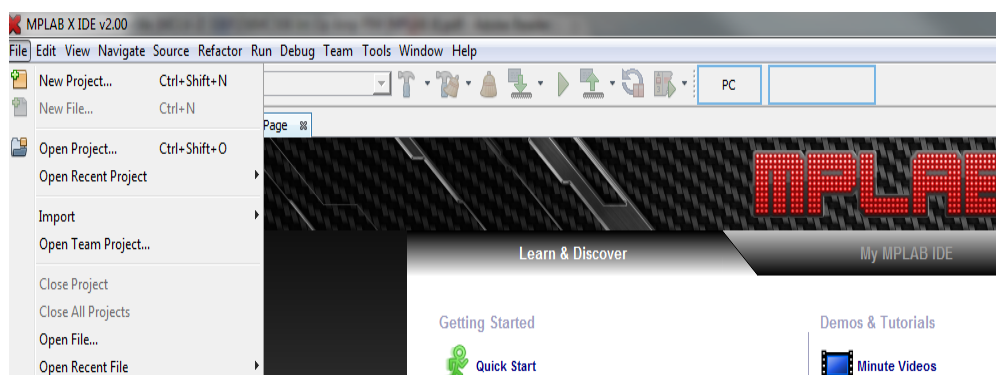
NOTE: Code uses Motor Control Library for some of the functions. To run the code the library files has to be included in the project. Details on usage of motor control library can be found on <http://www.microchip.com/motor>.

- Copy the Motor Control library header files into the MPLABX project directory.
- Include a copy of the Motor Control library archive file (libmotor_control_dspic33e-elf.a) in the “lib” folder located in the MPLABX project directory.

< project directory >

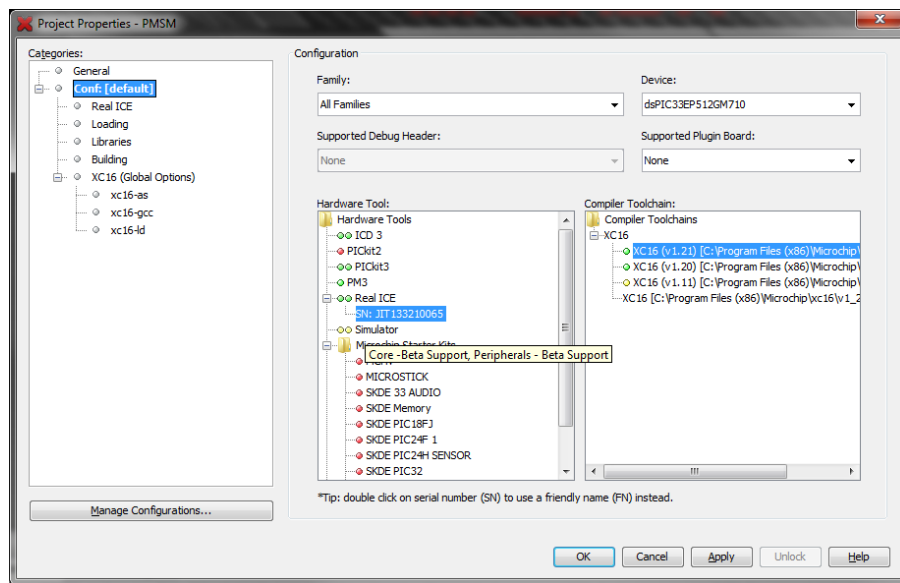


1. Start MPLABX IDE and open the PMSM.X workspace.



2. Right click on PMSM.X project on the left tab called “Project”, and select “Properties”. On the “conf” page you can select the programmer/debugger and the compiler tool chain. In this particular case, REAL ICE™ is the selected programmer and XC16 is the selected toolchain for building the project.

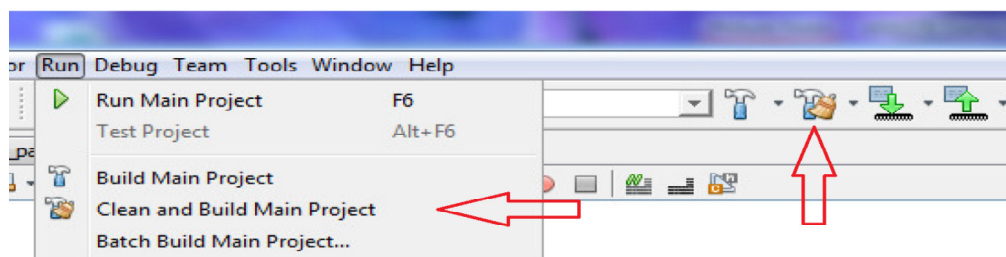
Demonstration ReadMe



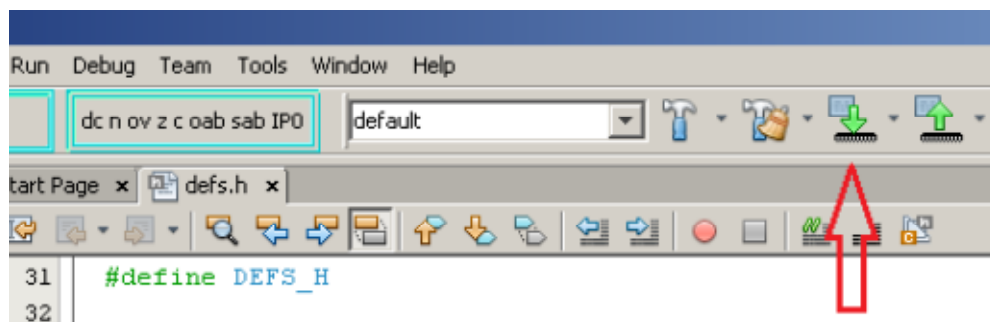
3. Make sure that `RTDM` and `DMCI_DEMO` are not defined in the `user_parms.h` file. This allows the push button and the potentiometer to have control over starting and stopping the motor and its speed. If this is defined, the motor will not start until the proper procedure is followed for the DMCI demonstration. Refer to Enhanced Demonstration Using Real-Time Data Monitor (R if the DMCI demonstration is required.

```
***** Real Time Data Monitor *****  
  
#undef RTDM // This defines the RTDM  
// to handle the RTDM  
// information  
  
#undef DMCI_DEMO // Define the DMCI_DEMO  
// and speed  
// and POT1
```

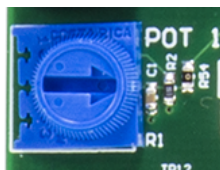
9. Build the code by selecting the “Clean and Build Project” button found either on the toolbar or in the “Run” Menu.



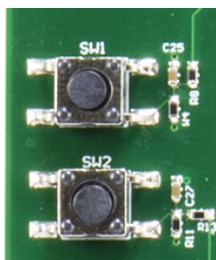
5. After a successful build, download the code to the target device on the dsPIC DSC signal Board by selecting the “Make and Program the device main project” button on the toolbar.



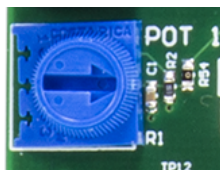
6. Turn and set the Potentiometer POT1 on dsPIC DSC Signal Board to the middle



6. Press SW1 button on dsPIC DSC Signal Board. The MOTOR A should start spinning smoothly in one direction.



7. Vary the motor speed using the potentiometer1 (labeled POT 1) on dsPIC DSC Signal Board.

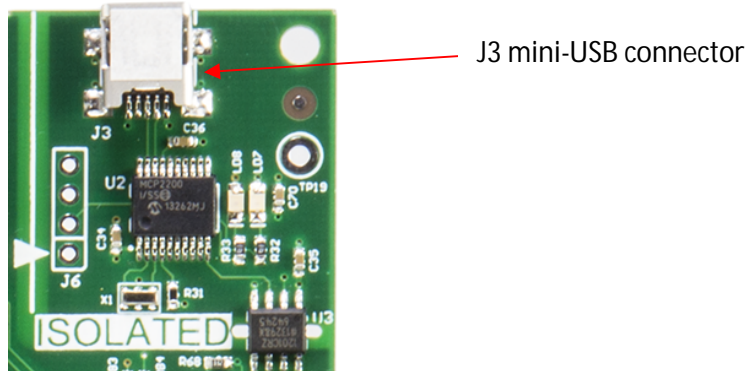


8. To double the speed of the motor, press SW2 on dsPIC DSC Signal Board. Pressing SW2 again will reduce the speed of the motor by 50%.
9. Press SW1 on dsPIC DSC Signal Board to stop the motor.

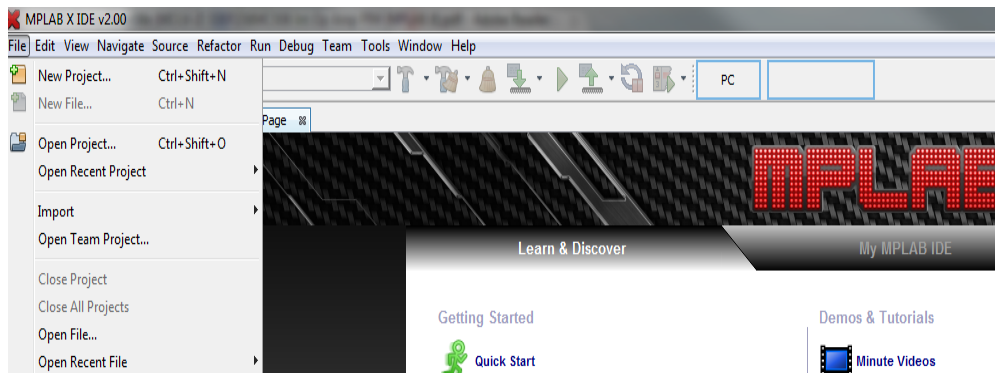
1.4.2 Enhanced Demonstration Using Real-Time Data Monitor (RTDM) and Dynamic Monitor and Control Interface (DMCI)

Make sure you have the correct hardware setup as previously described in **Section 1.3 “Hardware Setup”**

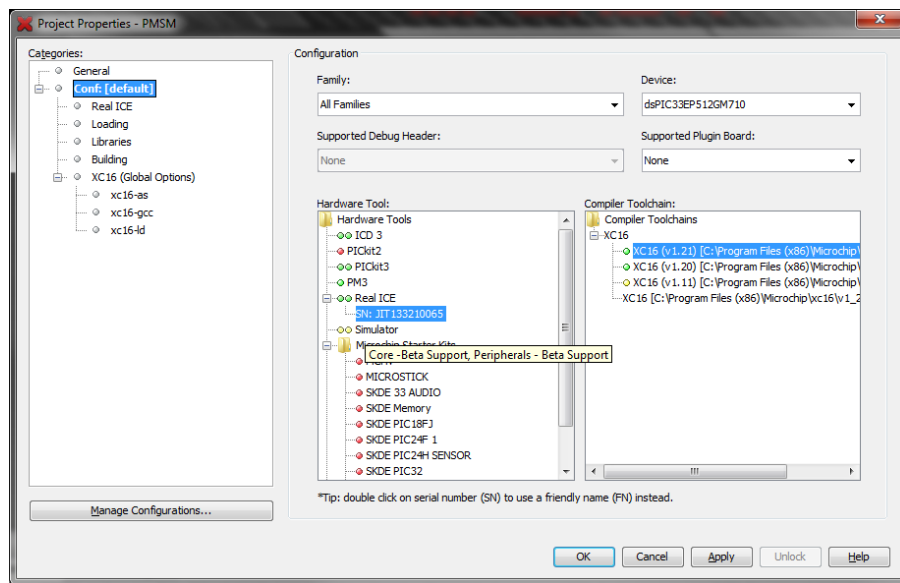
1. In order to utilize RTDM communication for this demonstration, a mini-USB connection is required. Connect a mini-USB cable from your computer to the J3 connector on the dsPIC DSC Signal Board.



2. Start MPLABX IDE and open the PMSM.X workspace.



3. Right click on PMSM.X project on the left tab called “Project”, and select “Properties”. On the “conf” page you can select the programmer/debugger and the compiler tool chain. In this particular case, REAL ICE™ is the selected programmer and XC16 is the selected toolchain for building the project.

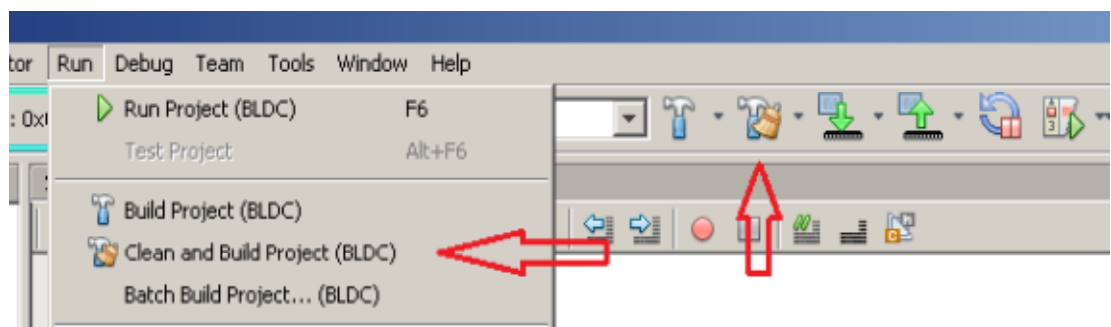


10. Make sure that RTDM and DMCI_DEMO are defined in the user_parms .h file. This allows DMCI to have control over starting and stopping the motor and its speed. If this is not defined, the motor will not start until the SW1 push button is pressed.

```
//***** Real Time Data Mo
#define RTDM          // This defini
// to handle R
// information

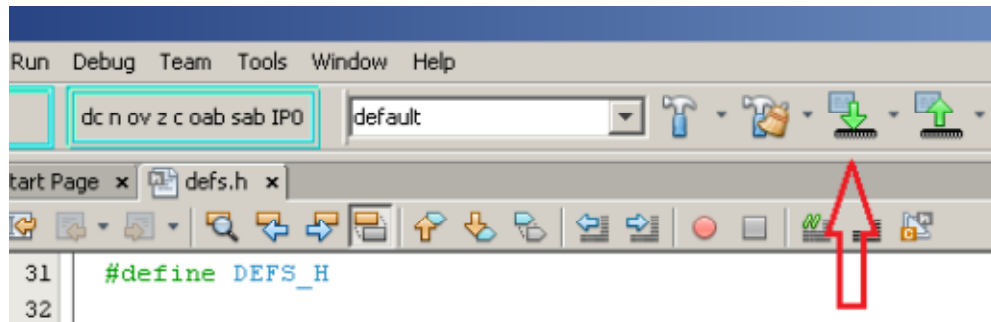
#define DMCI_DEMO    // Define this
// and speed v
// and POT. Un
// this applic
```

5. Build the code by selecting the “Clean and Build Project” button found either on the toolbar or in the “Run” Menu.

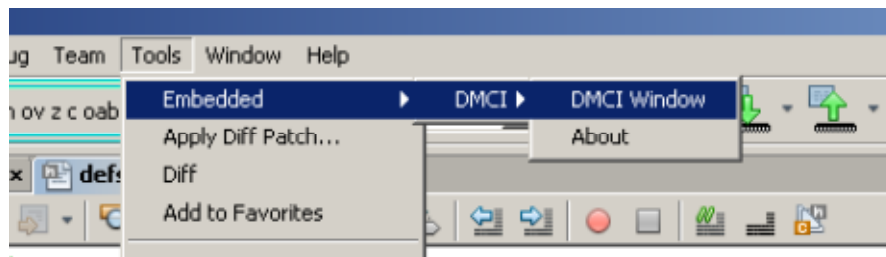


Demonstration ReadMe

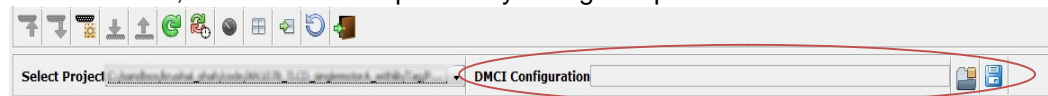
- After a successful build, download the code to the target device on the dsPIC DSC signal Board by selecting the “Make and Program the device main project” button on the toolbar.



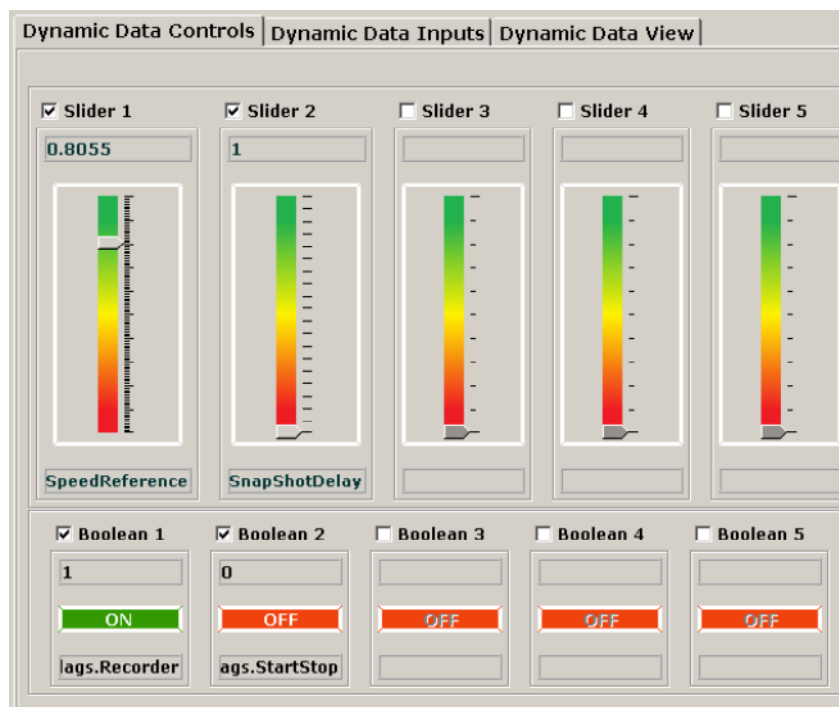
- Open the DMCI window by selecting Tools>Embedded>DMCI>DMCI Window.



- Click the **Load Profile** icon, and from the same folder where your project resides, load the DEMO.xml file, which contains a previously configured profile



- The DMCI window appears as follows:

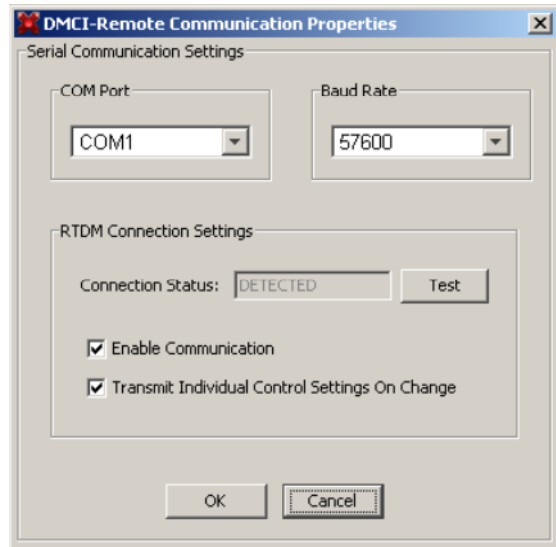


Please consult the “*Real-Time Data Monitor User’s Guide*” (DS70567) for additional settings needed for a RTDM connection. This document explains the steps needed for the proper communication settings between the Host and Embedded side.

10. Select *Serial Settings* to connect RTDM with your computer..



11. Remote Communication needs to be established, as indicated in the following figure (the communication baud rate should be set to 57600, while the COM port used depends on your particular settings).



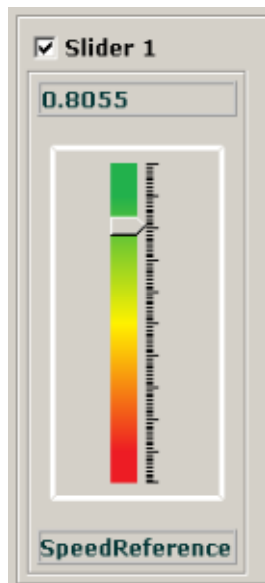
12. Once communication is detected, make sure the **Enable Communication** box is checked and click **OK**.
13. **Receive data** in the DMCI window to use the initial setup from the target device.



14. Press START/STOP in the DMCI window to start the motor at initial speed



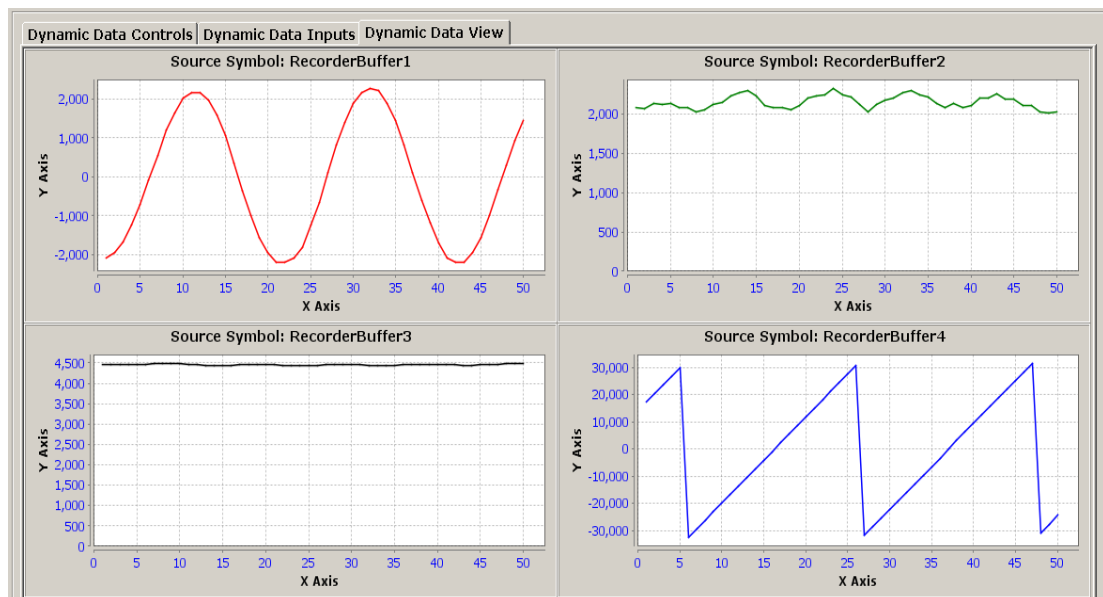
15. Vary the speed of the motor by using the *Speed Reference* slide control. Be sure to do this slowly, so that the speed controller has time to change the speed to a new set point



16. To plot variables in real time, enable Automated Event Control by clicking the automatic event execution icon found on the toolbar..



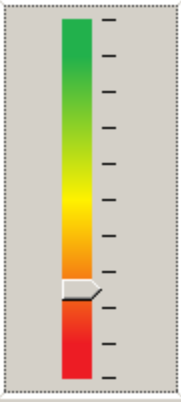
17. The DMCI window shows variables plotted in real time, which are updated automatically.



18. To change the time window to see more time on each plot, change the value of the SnapShotDelay, which controls how the buffers are being filled in the code.

☒ Slider 2

5



SnapShotDelay

1.5 I/O CONFIGURATION

1.5.1 Analog I/O Configuration

Refer to the PIM information sheet for the details regarding the analog circuitry and PIM schematics. The PIM information sheet document is available at www.microchip.com/pims.

1.5.2 Digital I/O Configuration

Functional Description	Device Pin Function	Input/Output
PWM	RB10 through RB15	Output
Switch SW1	RC4	Input
Switch SW2	RG6	Input
POT1	RE13	Input
Debug LED1	RA10	Output
Debug LED2	RD8	Output
UART 1 TX (DE2-MCP8024)	RG8	Output
UART 1 RX (DE2-MCP8024)	RG7	Input
UART 2 TX (RTDM)	RF1	Output
UART 2 RX (RTDM)	RC5	Input